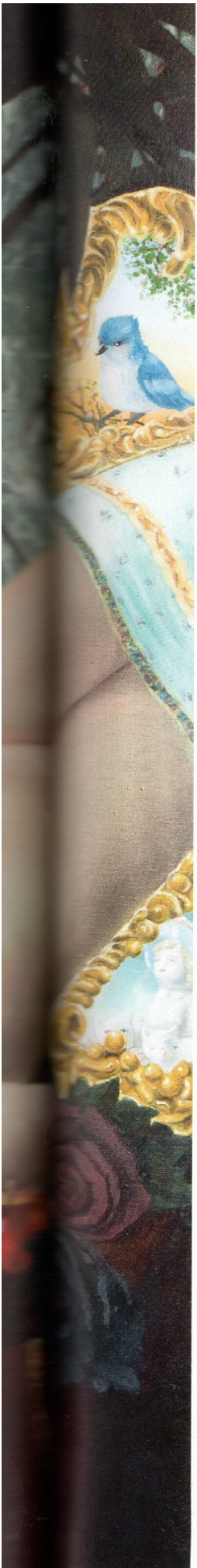


The Guide Artists Magazine

ISSUE 14 / APRIL 2018





KLÁRA SEDLO / Artist Statement

My paintings are tightly connected with childhood, mostly in the way that I construct them – similar to children, I personify things. The objects in my paintings, therefore represent living people, emotions or desires. For example, I express the feeling of being home through marshmallow trees and lamp in the shape of house on the wall, these create an idea of cozy light cabin at the edge of the woods. Conversely the shiny glittering unicorn can bear the meaning of easy, superficially, beautiful lies, while the old toy black horse refers to something ugly but truthful. And a view of a blue sky means unreachable happiness – although we see it, it is too difficult to reach it. My paintings are thus charged with symbolism.

As mentioned above, the way I perceive the world is similar to the way children see it – full of „living” things which can become bearers of meanings. However I don't focus solely on children's toys and nostalgic memories in my compositions. I mostly depict useless things which adults buy to keep their sadness at bay – the shiny, cute and fluffy nonsenses, sweets and knick-knacks through which we try to buy the feeling of calm and happiness – a feeling that

is as unreachable as the blue sky. I aim to convey modern superficial society. People are consumed by the fear of seeking the truth; they opt to remain on the surface of things, never venturing into the deeper meanings. The society's choice is never to look deeper; never to ask if the man with horns on his head is evil or whether he just wants us to see something ugly but truthful. The choice is never to ask if those nice kitschy things are really what we need to achieve happiness.

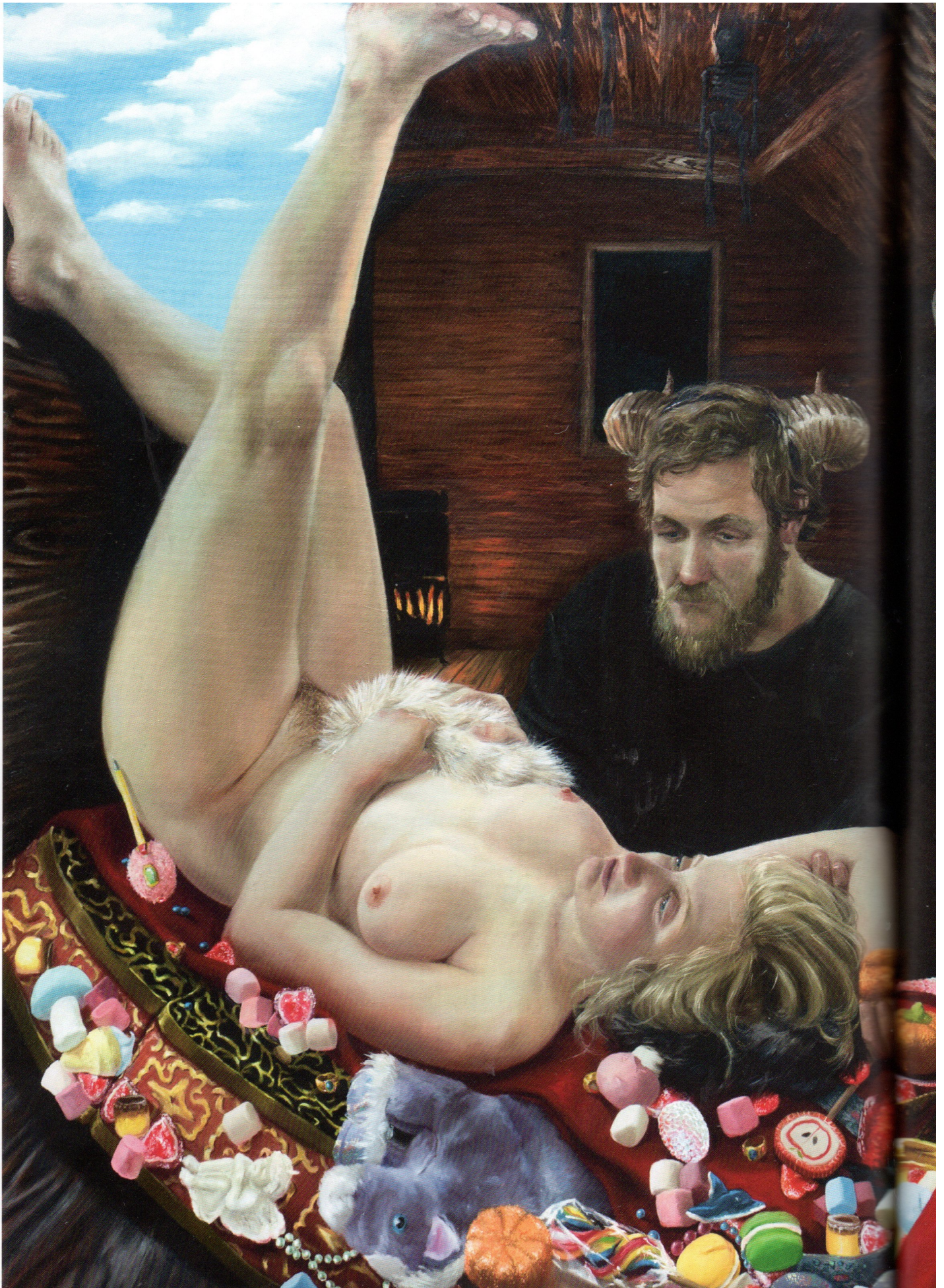
I aim to create paintings that prompt us to ask: who is really the devil here? What is hidden behind the shiny beautiful objects?

The catharsis of these ideas lies in my series called „About Superficiality,” a collection of several two-meter sized canvases full of symbols and hidden meanings. In these series as well as in my all other pieces, I create my own artistic „language” to express myself, as the existing ones simply does not fit my „words”.

INSTAGRAM
@klarasedlo

◀ 'Another is dying due to shallow society' 2017
Oil on canvas







'Selfportrait with Marshmallows II' 2018
Oil on canvas

◀ 'The Way Leads in Opposite Direction' 2017
Oil on canvas





'Tower I' 2018
Oil on canvas

◀ 'Tower II' 2018
Oil on canvas



'Marshmallow on the Wall I' 2018
Oil on canvas



'Marshmallow on the Wall II' 2018
Oil on canvas



'House by the Forrest' 2018
Oil on canvas



'Altar of truth' 2017
Oil on canvas



'Lake in Spruce Forest' 2018 . Oil on canvas